

PT. EPTCO DIAN PERSADA

We Grow Together
since 1986



Company Background

• Founded in February 1986 •

“More than 3 **decade** of experience, **EPTCO** continuously reenergized it's working process and commencing Medium & large scale for domestic projects particularly in Civil, Building, Piping, Pipe Line, Marine Jetty and Skilled Manpower Supply Services all over Indonesia in the sector of **Oil & Gas, Energy and Industrial Plant**.”

Stands for “**E**ngineering, **P**rocurement, **T**ransportation, **C**onstruction and **O**peration” are our prominent services. Our expanding in the field of Engineering, Construction, Trading and Maintenance works by providing highly qualified and professional skilled Manpower, have been proven to meet the most demanding budget, quality and deadline

“**EPTCO** is committed to satisfying it's clients expectations by providing products and services under rigid and beyond benchmark quality requirements”

Engineering

Engineering design for civil and piping construction has been one of our expertise that attracted many suitors. We also work with and provide top notch consultants. By combining science and idea, we cover meticulous engineering for foundation, steel structure, building, and piping.

Procurement

Procurement activities are one of the vital elements in constructions. A simple is calculation of time in material and equipment delivery can harm any solid project schedule. We put our monitoring procurement task to even the most difficult test. This subtle awareness of business is elevated to another level, as we inspect every material purchasing, fabrication, shop testing up to packing and shipment. We do every single step ensuring every materials and equipment are in accordance with the approved technical spesifications, and provided with the appropriate Mill certificate and Test report.

Transportation

EPTCO has ben extending its high level of competence in managing transportation service, mobilization and demobilization materials, plant and equipment to any destination within Indonesia Island or as required by our client. No Shipment is to small, event if it's a simple package, we will render the same quality of service. Our involvement is from planning stage, fleet survey conducted by will known and client's approved surveyors, proper packing, insurance coverage up to structural set up and ensuring safe arrival at final destination.

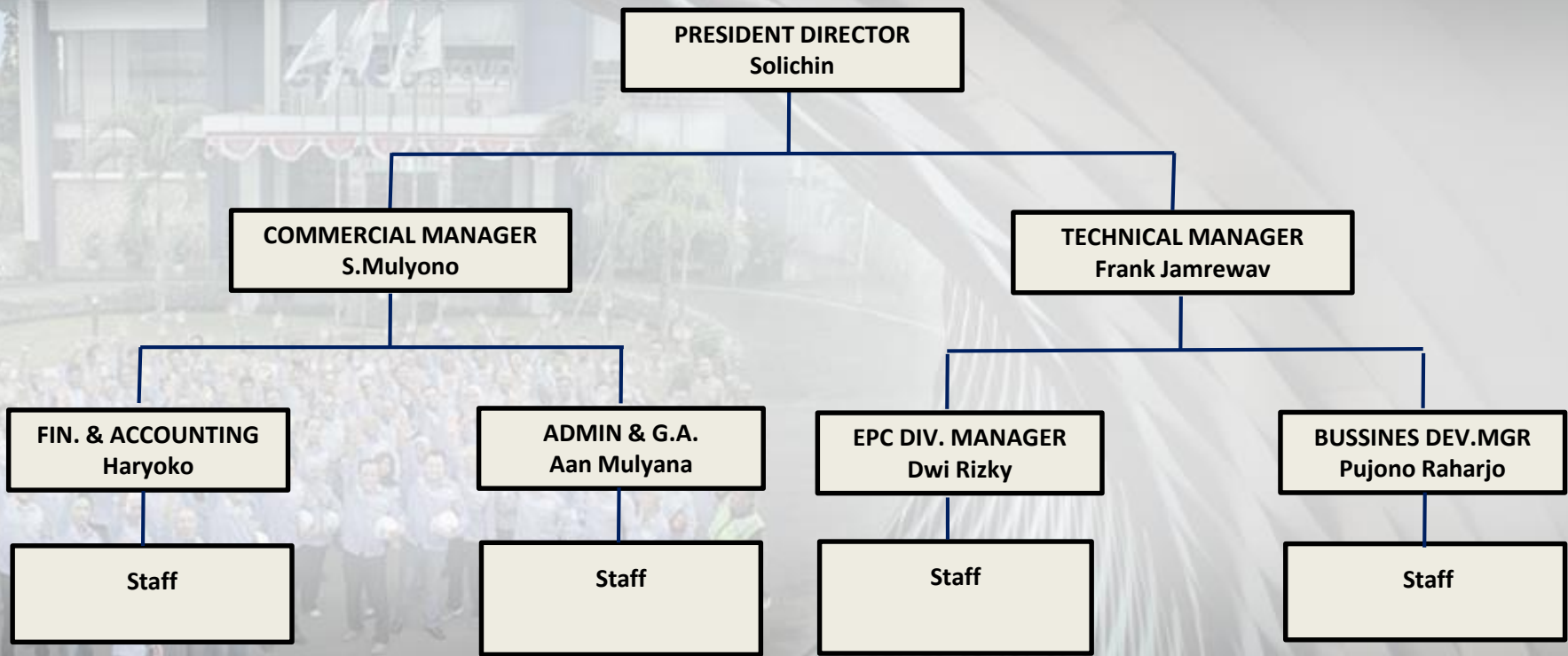
Construction

EPTCO pride itself in precise monitoring system. From detailed project plans, monitoring to error identification and corrective action carried out, every step of every project. With this set views on achieving perfection, our team has remain evemore solid and most definitely qualified to give out standing work performance.

Operations

Operations in engineering and construction encompass maintenance, manpower supplies, and general services. Things that interweave and bring magic into project. Our staff have growing, top of the field insightinto providing valued clients with their goals. For over 20 years, we have learned from and work with the very best. This has establish EPTCO as the think tank of excellent minds and committed team of people.

Company Organization Chart





Jakarta Head Office

Granadi Building, South Tower 6th Floor
Jl. HR. Rasuna Said Block X-1, Kav.8-9 – Jakarta Indonesia

Cilacap Operation Office



Cilacap Operation Office – Central Java

EPTCO Building - Jl. Dr.Sutomo No.19B, Gunung Simping
Cilacap – 53224 - Indonesia

Workshop EPTCO Cilacap



Workshop EPTCO Cilacap – Central Java

Jl. Dr.Sutomo No.19B, Gunung Simping
Cilacap – 53224 - Indonesia

Honbola Base Camp



Honbola Base Camp – Central Sulawesi

Jl. Trans Luwuk Toili, Honbola, Batui, Banggai.
Central Sulawesi

Experiences of **EPTCO** Project



INDO BHARAT RAYON PROJECT Various Civil Works – EDTA & CAP



General Civil Work



PT Solusi Bangun Indonesia – Cilacap Jetty Expansion Project



EPCC Pipeline from Cluster LHD13 to Cluster LHD05 Pertamina Geothermal Energy Area Lahendong – North Sulawesi



Piping Works, Civil Works, Insulation, Mechanical, and
Commissioning



CSTS Tangguh LNG Expansion Project - PAPUA

Construction Work for the following packages:



Pre-Engineered
Building



Underground Piping
HDPE Pipe



Earthworks
Management



INDO BHARAT RAYON PROJECT Various Civil Works



Retaining Wall and Mini Pile at Old LandFill



CW Pump, Workshop & Warehouse

Tambak Lorok Combined Cycle Power Plant 600 – 850 MW Project



- Circulation of water pump
- Foundation, Exterior & Interior for Warehouse and Workshop



INDO BHARAT RAYON PROJECT Various Civil Works



- Concrete of Temporary Storage Area
- Making Boundary Wall at Truck Area
- Drain Construction at Power Plant



Proyek Langit Biru Pertamina RU-IV Cilacap

Construction Work for the following packages:



General Civil Works



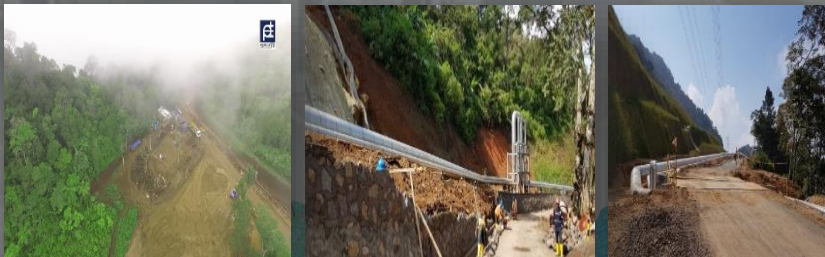
Raw Water Intake
Facilities



Piping Fabrication
for Brown Field



2nd Stage Civil Work - Karaha 1 X 30 Mw – Nett GE Power Solution Indonesia



Street Lighting, Cabling Earthing, Pipe Sleeper & Equipment
Foundation, Excavation



Fuel & Power Line to Inland Harbour

Donggi Senoro LNG - 21.800 MH (Fuel Line & Power Line)



Construction of New Flare RDMP Pertamina Balikpapan – East Kalimantan



EPCC OF GAS PIPELINE FOR AMMONIA PLANT PT. Panca Amara Utama – Central Sulawesi



Inland Harbour Project (EPC)

PT. DSLNG – Central Sulawesi



Matindok Gas Development Project

30" x 23.5 Km Gas Pipeline (C) – Central Sulawesi - Indonesia



PT. Indonesia Bulk Terminal – Pulau Laut

Rectifier Breakwater “Delta Project” (P & C) – South Kalimantan



Corporate Sustainability Initiatives

Health, Safety and Environment (HSE)

EPTCO is highly committed to maintain a positive HSE environment in every aspect of our operation.



Ensure that every employee to achieve a Zero Accident rates by carry out regular inspection, documented field activities, training and programmes.



Being proactive by taking action towards the conservation and preservation of the environment by continually seek to improve our operating procedures and equipment.

Corporate Sustainability Initiatives

Contribution to Society

We are thoughtful of our duty to return the worth we create through our business to the community:

- We have commenced and supported various social, environmental and community projects
- To ensure there are added values for every contribution we have made to the society.

<p>Kaleng bertekanan material kimia baterai bekas</p>  <p>Hazardous Waste</p>	<p>paper bag limbah kayu karton/keras bekas</p>  <p>Combustible Waste</p>	<p>sampah makanan</p>  <p>Organic Waste</p>	<p>botol plastik kaleng minuman botol kaca</p>  <p>Recyclable Waste</p>
<p>kelola limbah demi kesehatan, keselamatan lingkungan kita</p>			

pisahkan
sampah kita



eptco go green!



our green policy

Thank you



You may visit us on our website
www.eptcogroup.com

mngmnt@eptcogroup.com



We Grow Together
since 1986

